



CENTRAL SUBWAY

John Funghi
Program Director



Construction Activities

Contract 1250 – Moscone & Portal Utility Relocation Update:

- SFMTA Board approved final contract modification on November 20, 2012
- Processing final payment
- As-Builts completion

Contract 1251 – Union Square Utility Relocation Update:

- Substantial completion date of August 16, 2012
- Preparing for SFMTA Board closeout calendar item - February 5, 2013
- Final inspection approval to be completed in February 2013



Preparing to re-open Stockton Street
for the holiday moratorium



Preparing to re-open Stockton Street
for the holiday moratorium



Construction Activities (Cont'd)

Contract 1252 – Tunneling Contract

- South TBM ships February 20, 2013
- Fabricated tunnel precast segment test rings in mid January
- TBM Launch Box
 - Permanent TBM power installed
 - Slurry walls complete
 - 39 of 43 deck beams complete
 - Started excavation for 1st level bracing
 - Jet grouting 90% complete
 - Restored two southbound lanes on January 14th, 2013
- Moscone west: 2 of 4 slurry panels complete
- Ellis Street Shaft
 - Continue jet grouting
- UMS Headwalls
 - Continue utility demo for headwalls (north)
 - Pile installation for headwalls
 - Jet grouting
- North Beach Retrieval Shaft
 - Prepare Pagoda site demolition drawings
 - Prepare retrieval shaft design drawings
 - Negotiate design/build effort
- Partnering meeting held on January 7, 2013



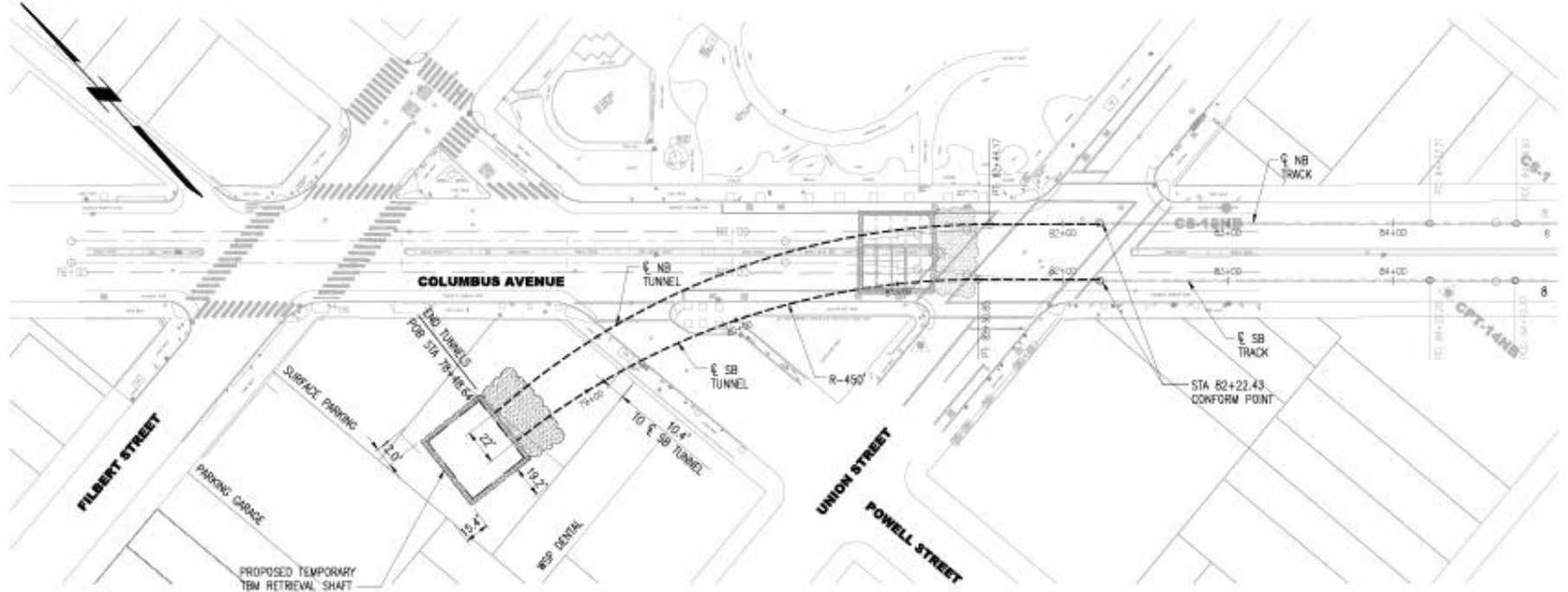
Launch Box Excavation



Setting Rebar Cage N2 at MOS



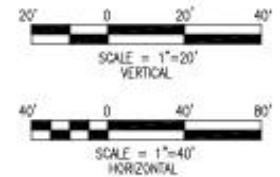
Pagoda Palace Option



Pagoda Palace



Inside the Pagoda Palace





Pagoda Palace Option

Entitlements

- The Special Use District (“SUD”) legislation enabling use of the site was introduced at the Board of Supervisors on January 8th
- The SUD and the Conditional Use (“CU”) entitlement applications will be heard by the Planning Commission on February 7th
- The BOS Land Use Committee will hear the SUD on February 11th
- The full BOS is expected to act on the SUD at its meetings on February 12th and February 26th
- SHPO review and approval anticipated in February 2013



Pagoda Palace



Safety and Security Management Plan

SSMP Update:

- Safety & Security Certification Committee meetings were held on November 15, December 20, 2012 and January 17, 2013
- 1256 Surface, Track and Systems Design Safety and Security Checklist approved
- UMS Construction Safety and Security Checklist approved
- MOS Construction Safety and Security Checklist approved
- STS Construction, Safety and Security Checklist for Systems in process

SSMP Forecast:

- PM/CM Staff training for Construction Safety and Security Checklists

Mitigation and Monitoring Reporting Plan

MMRP Activity Update:

- 2012 4th Quarter Update issued January 4, 2013
- Reporting document reflects current construction mitigations being implemented

MMRP Activity Forecast:

- Quarterly Update – March 2013



3rd Party Coordination

BART Activity Update:

- Ellis Street entrance purchase agreement status:
 - Property transfer anticipated by January 31, 2013

BART Activity Forecast:

- Closure of Ellis Street entrance in February 2013

SF PUC

- Agreement on 4th Street sewer replacement from Bryant to King streets
- Incorporated in Contract 1300 Addendum #2

SF Planning-Central Corridor Master Plan

- Ongoing coordination between Bryant to King streets on the following items:
 - Bulb outs
 - Pedestrian safety
 - Bike path





Real Estate Acquisition

Real Estate Activity Update:

- Temporary construction license/compensation grouting status
 - Tunnel: 1 compensation grouting remaining
 - CTS: 3 compensation grouting remaining
 - UMS: 7 compensation grouting remaining
 - MOS: 1 compensation grouting remaining
 - Board of Supervisor approval for Resolutions of Necessity to condemn remaining temporary construction licenses, if necessary – December 11, 2012
- Union Square
 - FTA Concurrence of Union Square Garage acquisition on December 5, 2012
 - Memorandum of Understanding with Rec and Park is being finalized
 - SFMTA Board approval in February 2013





Risk Management

Risk Mitigation Update:

- Conducted risk mitigation meeting #39 – November 8, 2012
- Conducted risk mitigation meeting #40 – December 13, 2012
- Conducted risk mitigation meeting #41 – January 10, 2013
- Primary Mitigation Report – issued January 25, 2013
- Updated risk register – 2nd Thursday of each month
- Identified new Risks associated Contract Strategy and Retrieval Shaft

Risk Mitigation Forecast:

- Submitted updated Risk Management Plan – January 25, 2013



Risk Management (Cont'd)

#	Mitigation Measures	Cost Savings to Carry Forward in Secondary Mitigation Plan (\$ millions)	Must Implement By
Included as Contract Options			
3	Defer UMS concourse-Develop Option for Contract Documents	\$6.7	Included in Contract 1300
21	MOS mezzanine level unfinished. Develop Option for Contract Documents	\$2.6	Included in Contract 1300
Not likely to be implemented			
	LRV Procurement Strategy to obtain high floor vehicles	0	
	Total Cost Savings to Carry Forward as of December 2012	9.3	



Final Design Activities

Department of Building Inspection

- Chinatown Station (CTS-1254R)
 - December 10, 2012, *submitted verification docs*
 - January 02, 2013, *Demo Permit Approved*
 - Building Permit plan check– *parallel review in progress*
 - Pre-approval: January 31, 2013
- Union Square/Market Street Station (UMS-1253)
 - November 2012, *submitted verification docs*
 - Pre-approval: January 31, 2013
- Yerba Buena/Moscone Station (YBM-1255)
 - January 02, 2013, *submitted verification docs*
 - Demo Permit Approval *Pending*
 - Building Permit – *parallel review in progress*
 - Pre-approval: February 2013

Planning Department

- Projected Planning Department final approval in February 2013:
 - CTS and YBM construction drawings



Union Square/Market Street Station



Yerba Buena/Moscone Station



Chinatown Station



Stations BID Package Update

- Contract 1300 Advertised October 22, 2012
- Addendum No. 1 issued November 15, 2012
- Addendum No. 2 issued December 18, 2012
- Addendum No. 3 issued January 25, 2013
- Contract 1300 Pre-Bid Conference and meet-and-greet event: November 27, 2012
 - More than 150 attended and over 75 companies participated
- Contract Consolidation/Enhancements:
 - “A - B + C” Bid
 - Removal of individual contract integration constraints
 - BOS approval of lowering liability limit to \$50 million - January 15, 2013
 - Train Control Contract 1266 - February 15, 2013
 - Union Square Holiday Moratorium Elements
 - Introduces Parklets





Summary Cost Report

Summary Cost Report										
(\$ in millions)										
Category	SCC Codes	Current Cost Estimate ¹ Previous Month vs Current Month			Commitments ²		Incurred (Expenditures + Approved for Payment)		Current Forecast	
		Previous Month	Transfer/ Changes	Nov. 2012	To Date	Nov. 2012	To Date	Nov. 2012	Current	Change from Last Period
Construction	10 - 50	\$1,080.6	-0-	\$1,080.6	\$271.8	-0-	\$106.5	+11.83	\$1,080.6	-0-
Real Estate	60	\$37.4	-0-	\$37.4	\$36.4	-0-	\$16.1	+0.24	\$37.4	-0-
Vehicles	70	\$26.4	-0-	\$26.4	\$0.0	-0-	\$0.0	-0-	\$26.4	-0-
Professional Services³										
Preliminary Engineering	80.01	\$46.2	-0-	\$46.2	\$46.2	-0-	\$46.3	-0-	\$46.2	-0-
Final Design	80.02	\$83.7	-0-	\$83.7	\$83.4	-0-	\$59.8	+0.68	\$83.7	-0-
Project Management	80.03-80.04	\$206.4	-0-	\$206.4	\$74.7	-0-	\$47.1	+1.53	\$206.4	-0-
Other*	80.05-80.08	\$22.9	-0-	\$22.9	\$11.3	-0-	\$8.3	(0.089)	\$22.9	-0-
Finance Charges	100	\$0.0	-0-	\$0.0	\$0.0	-0-	\$0.0	-0-	\$0.0	-0-
Unallocated Contingency	90	\$74.7	-0-	\$74.7	\$0.0	—			\$74.7	-0-
Grand Totals		\$1,578.3	-0-	\$1,578.3	\$523.7	0.0	\$172.8	+14.2	\$1,578.3	-0-

1 - Current Cost Estimate (CCE): These columns reflect the project budget based on the approved transfers/changes from the previous month.

2 - Commitments: This includes awarded contract/MOU values, programmed real estate values and programmed agency/labor other direct costs (ODCs).

3 - Professional Services includes SFMTA, City/County, consultant charges and associated ODCs.

4 - Other includes legal, permits, review fees by other agencies, surveys, testing, investigation, inspection and startup.

Note: This chart is generated from the Summary - Grouped by Project, SCC Summary and SCC Code Report. See Appendix A for more information.

Incurred costs and commitments for construction include Form B amounts.

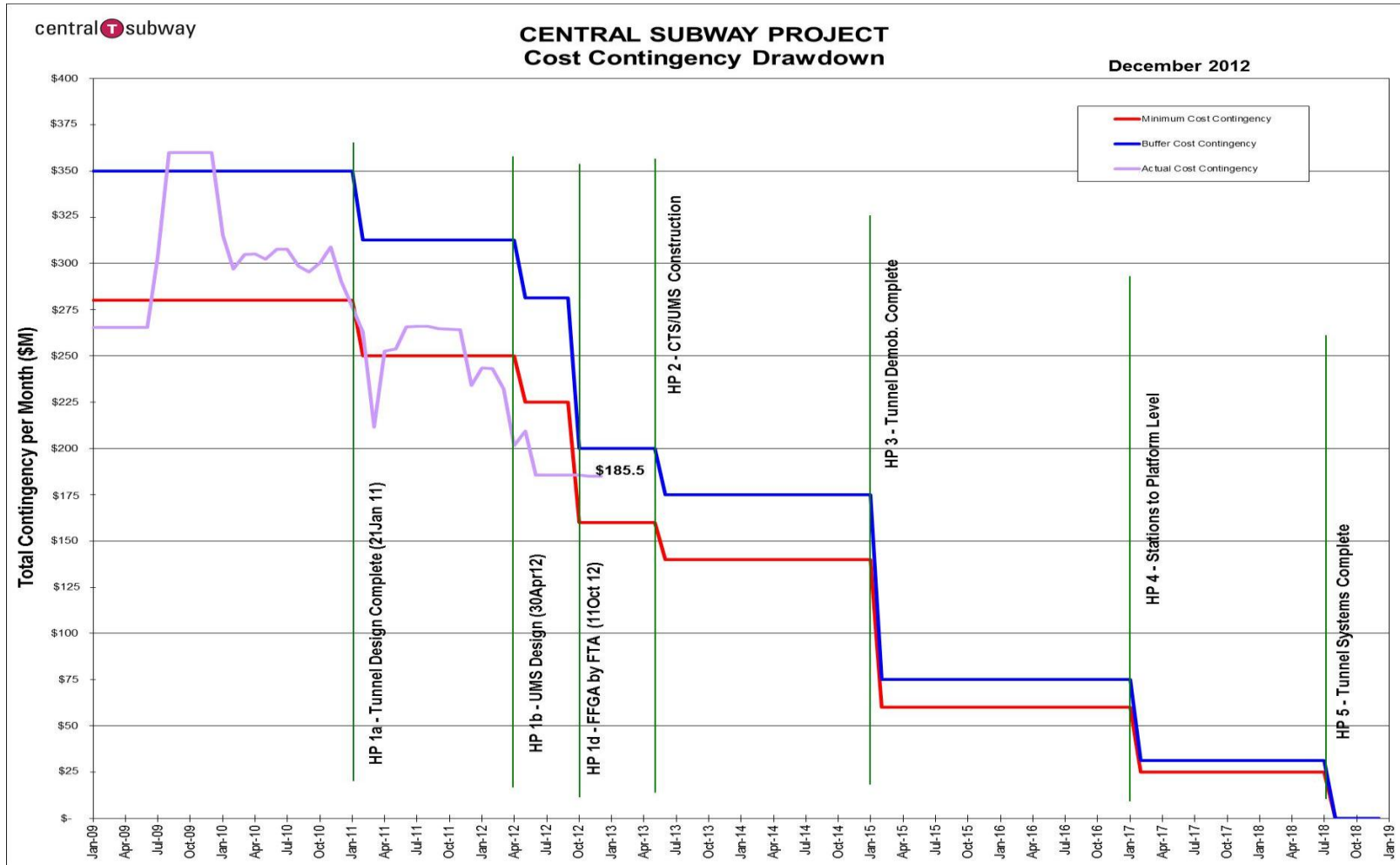


Project Funding

	Committed	Total	Expenditures as of 11-31-12
<u>Federal</u>			
New Starts	942,200	942,200	87,578
Congestion Mitigation	41,025	41,025	38,238
<i>Federal Subtotal</i>	<i>983,225</i>	<i>983,225</i>	<i>125,816</i>
<u>State</u>			
Traffic Congestion Relief Program	14,000	14,000	14,000
State Transportation Improvement Program	88,000	88,000	
Prop. 1B / PTMISEA	307,792	307,792	71,601
Prop. 1A / High Speed Rail	61,308	61,308	-
<i>State Subtotal</i>	<i>471,100</i>	<i>471,100</i>	<i>85,601</i>
<u>Local</u>			
Prop. K Sales Tax	123,975	123,975	72,622
<i>Local Subtotal</i>	<i>123,975</i>	<i>123,975</i>	<i>72,622</i>
Project Total:	1,578,300	1,578,300	284,039

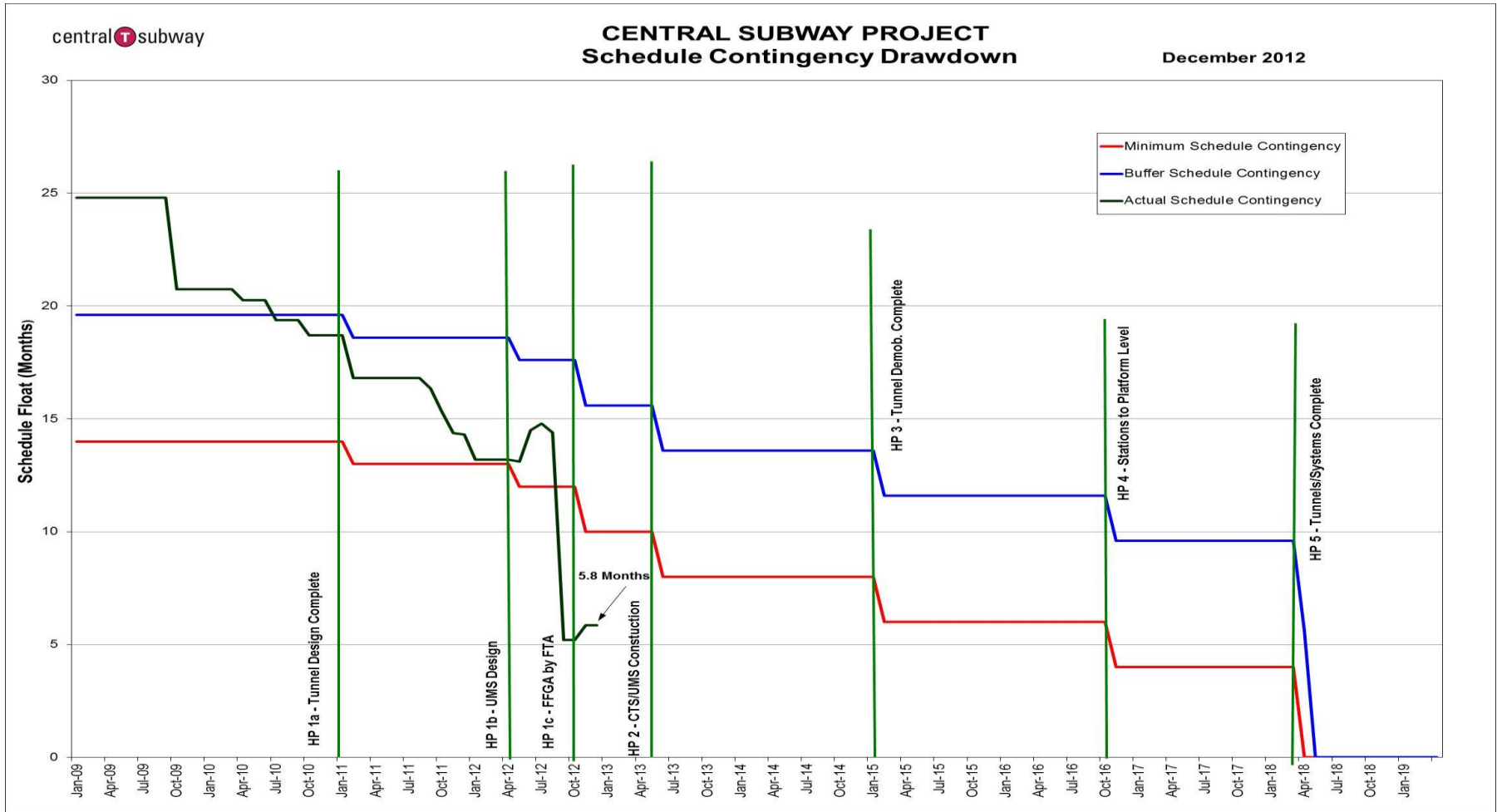


Cost Contingency Drawdown





Schedule Contingency



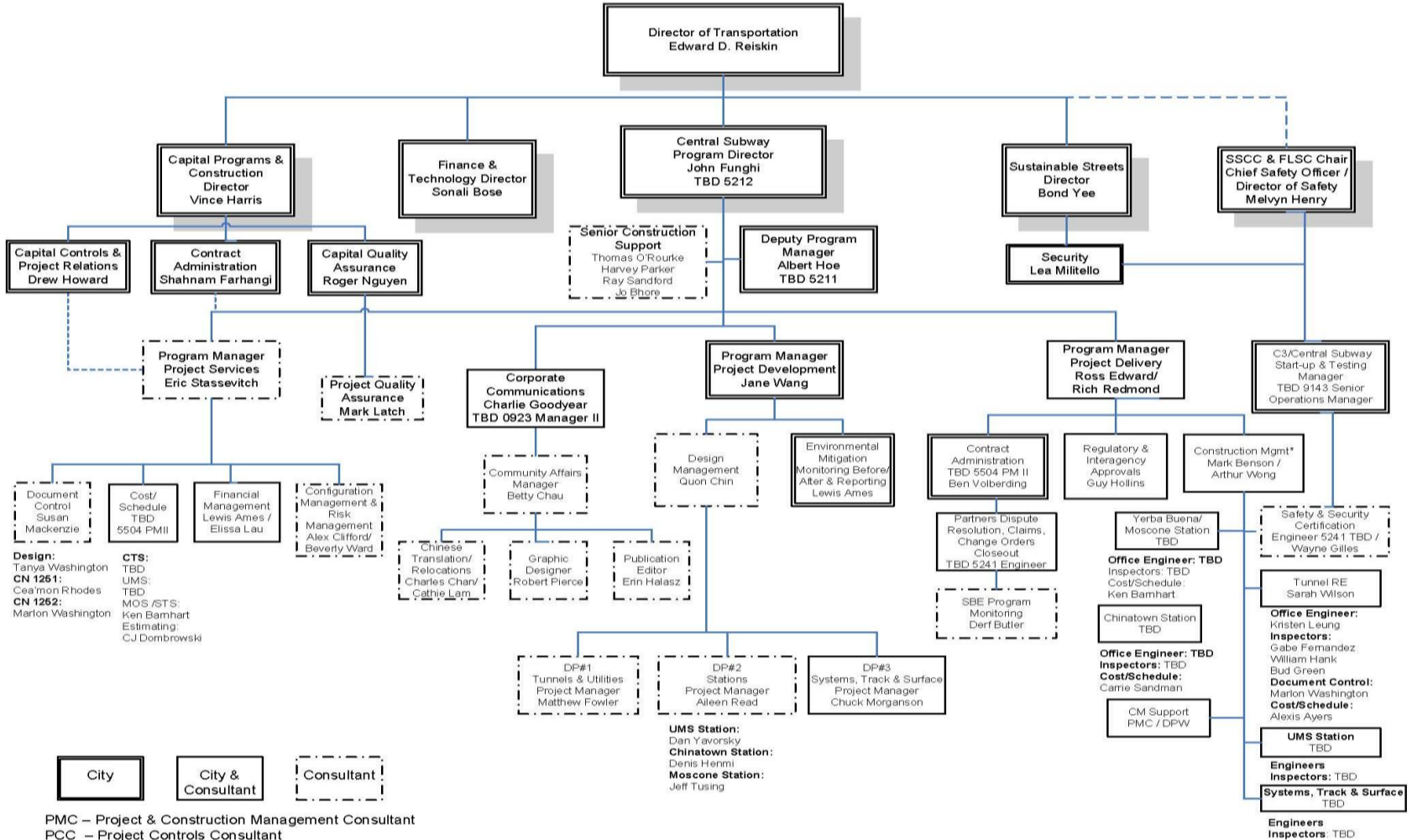


Staffing Status

Position	Status
Cost/Schedule Manger	Interviewing
Contract Administration Manager	Interviewing
Public Relations Manager	Advertising position
Program Delivery Manager	Advertising position
Resident Engineer: UMS, CTS, MOS, Systems	March Interviews
Assistant Resident Engineer: UMS, CTS, MOS, Systems	March Interviews
Office Engineer: UMS, CTS, MOS, Systems	March Interviews
Inspector: Tunnel, UMS, CTS, MOS, Systems	March Interviews
Dispute Resolution	2013 Advertisement
Executive Secretary	2013 Advertisement
Start-up Testing Manager	2013 Advertisement



Organizational Chart



City
 City & Consultant
 Consultant
 PMC – Project & Construction Management Consultant
 PCC – Project Controls Consultant
 SSC – Safety & Security Consultant

*See Construction Org. Chart 10/12/12